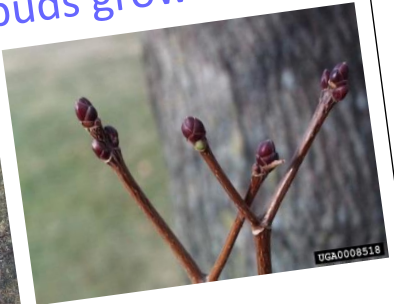
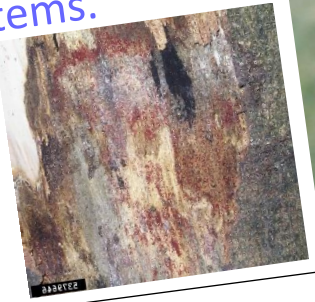


I am a sturdy broadleaf tree who can grow up to 20 metres and live for around 350 years.

My bark is light brown and flaky, and my twigs are slender and develop a corky bark with age. Small, grey leaf buds grow on long stems.



Can you name me?



My flowers are small, yellow-green, cup-shaped and hang in clusters.



My leaves are small, dark green and shiny, with five lobes and rounded teeth. They change to a rich, golden yellow before falling in autumn.



I am the UK's only native tree of my species. You will find others like me in many gardens and parks due to our tolerance of pollution and beautiful rich autumn colours.



After pollination by insects, flowers develop into large, winged fruits which are dispersed by wind. In Autumn look out for new seeds which are tinged with pink and the wings on the seeds set in a straight line.

